

Music Assessment Criteria

Mark Lortz - 5/1/20



**What are
Maryland State
Large Group
Adjudicated
Ensemble
(LGAE)
Assessment
Criteria**

1. Tone
 2. Intonation
 3. Technique
 4. Balance
 5. Interpretation
 6. Musical Effect
 7. Other Factors
-

Tone

Indicator

- Produces a characteristic tone quality
- Produces a focused, controlled sound in all registers
- Demonstrates proper use of vibrato when applicable
- Produces quality, characteristic sound on percussion instruments through proper technique and equipment

Key Words

- Beauty
- Control
- Blend
- Breath Support
- Range
- Embouchure



Intonation

Indicator

- Produces uniform tonal focus throughout the ensemble
- Demonstrates careful attention to tuning and pitch process
- Demonstrates understanding of chordal and harmonic structures
- Adjusts perceived pitch issues
- Demonstrates percussion tuning to match ensemble

Key Words

- Chords
- Melodic Line
- Tutti
- Pitch Adjustments

ii/V=vi, IV/V=I, v/V=ii, vi/V=iii, and \flat VII/V=IV

V ii°/V \flat III/V iii/V III#/V iv/V

v/V \flat VI/V vi°/V vii°/V V

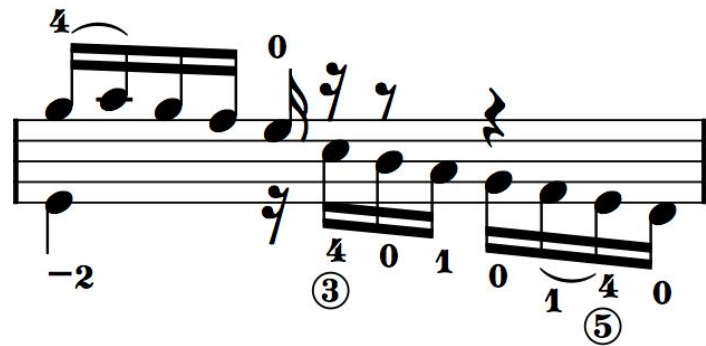
Technique

Indicator

- Meets technical demands with precision
- Demonstrates styles and contrasts of articulation
- Demonstrates dexterity in performing technical passages
- Starts and stops together, within sections and across the ensemble
- Demonstrates control of rhythm/tempo
- Demonstrates control of all meters present

Key Words

- Articulation
- Facility
- Precision
- Rhythm Accuracy
- Key Signatures
- Subdivision



Balance

Indicator

- Produces correct balance in all sections of the music
- Demonstrates balance between inner and outer voices
- Demonstrates balance to the melodic line
- Demonstrates the supportive relationship between winds and percussion

Key Words

- Ensemble
- Sections Staging/Placement
- Environment
- Counter melody



Interpretation

Indicator

- Demonstrates attention to detail
- Demonstrates the music's expressive features
- Shapes phrases with dynamics, articulations, and direction
- Demonstrates clearly defined dynamic contrast
- Demonstrates and understanding of proper style

Key Words

- Expression
- Phrasing
- Style
- Tempo
- Sensitivity
- Training

Lebhaft (noch etwas gedrängter.) Wagner. Götterdämmerung.

3 Oboes and 3 Clarinets in unison.

2nd Trumpet in D.

4 Horns in unison.

1st Violins.

2nd Violins.

Violas.

Brünnhilde.

Cellos.

in F.

f

pp

in D.

p *stacc.* *craso.*

p *craso.*

p *craso.*

mein Regal

Musical Effect

Indicator

- Demonstrates musicianship throughout performance
- Performs with confidence
- Demonstrates appropriate and consistent tempos
- Produces effective moods and emotions
- Demonstrates artistically satisfying phrase endings

Key Words

- Artistry
- Fluency
- Musicianship
- Cohesiveness



Other Factors

Indicator

- Produces evidence that selected literature is appropriate for the ensemble
- Presents a variety of idioms
- Demonstrates appropriate appearance and demeanor
- Demonstrates the highest level of professional performance

Key Words

- Choice of music
- Instrumentation
- Discipline
- Appearance
- Recovery from error



**Special Thanks
to Dr. Hicken
and Dr. Cicconi**